

# Instrumente -Thanatopraxie-



# Schere spitz / stumpf



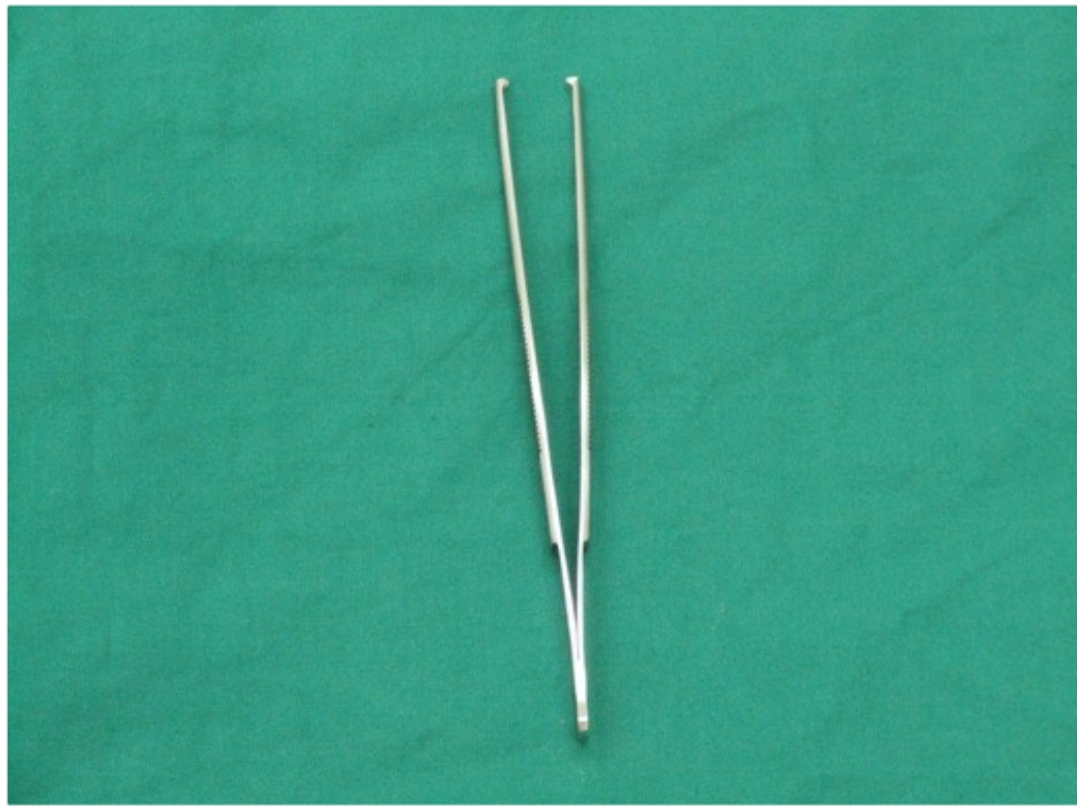
# Gefäßhaken



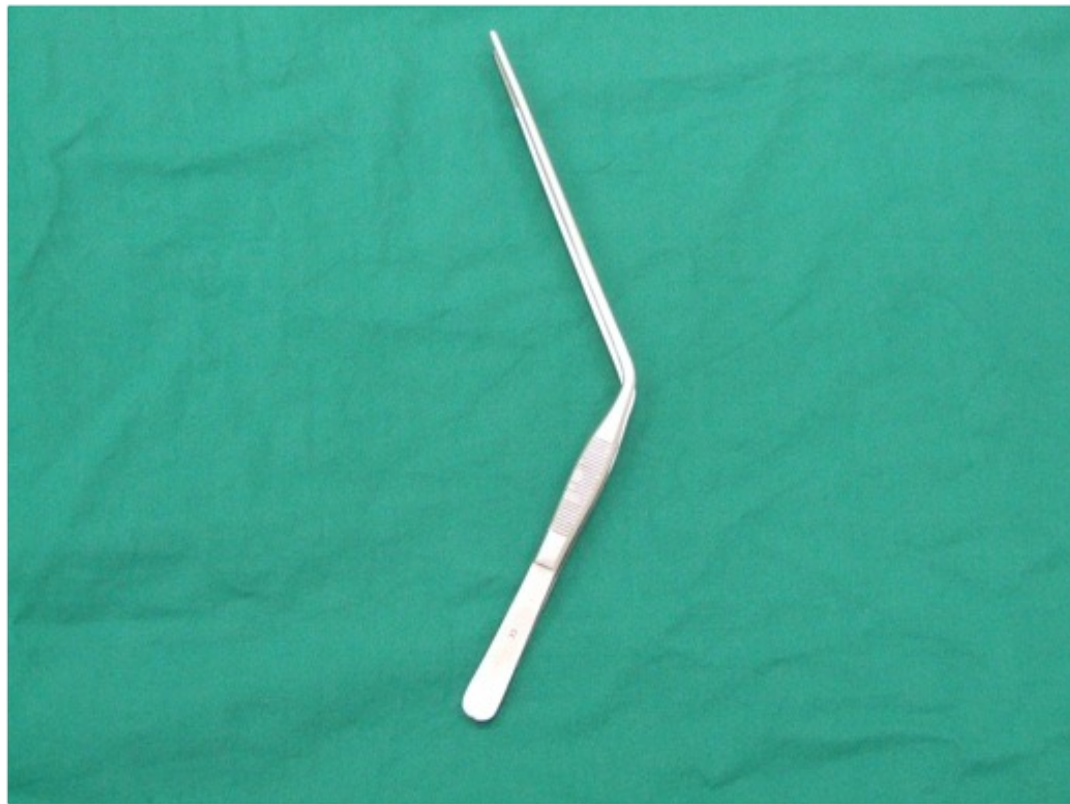
# Pinzette anatomisch



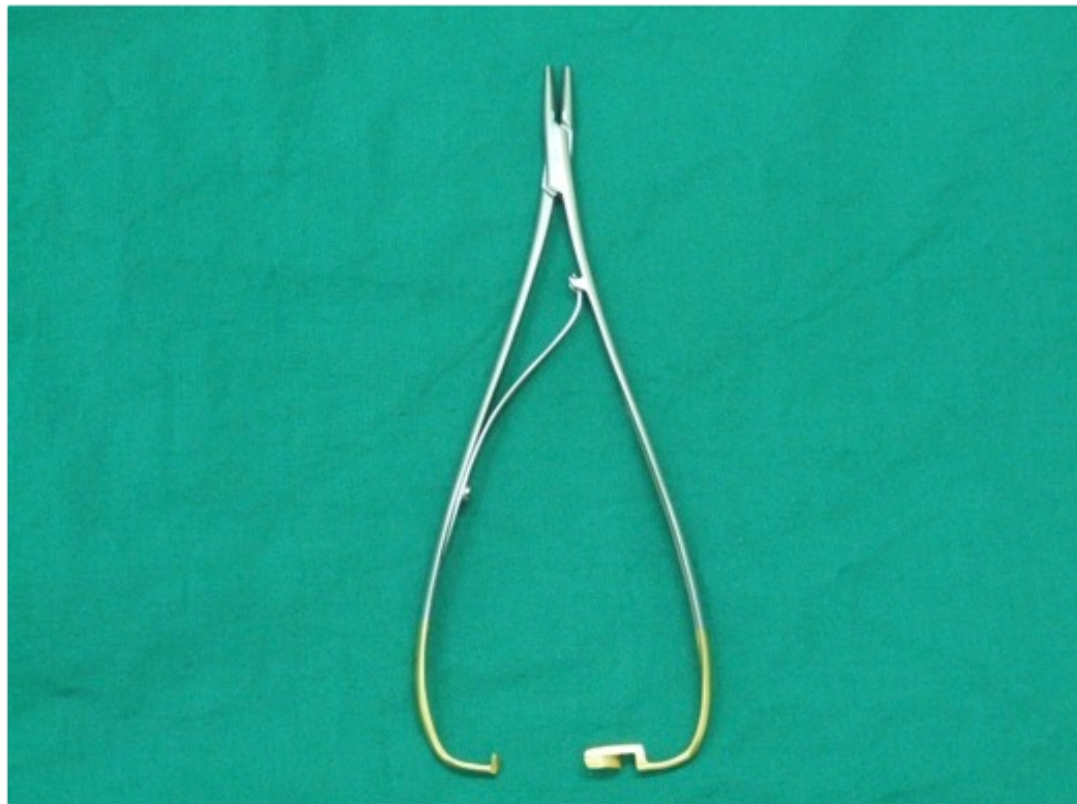
# Pinzette chirurgisch



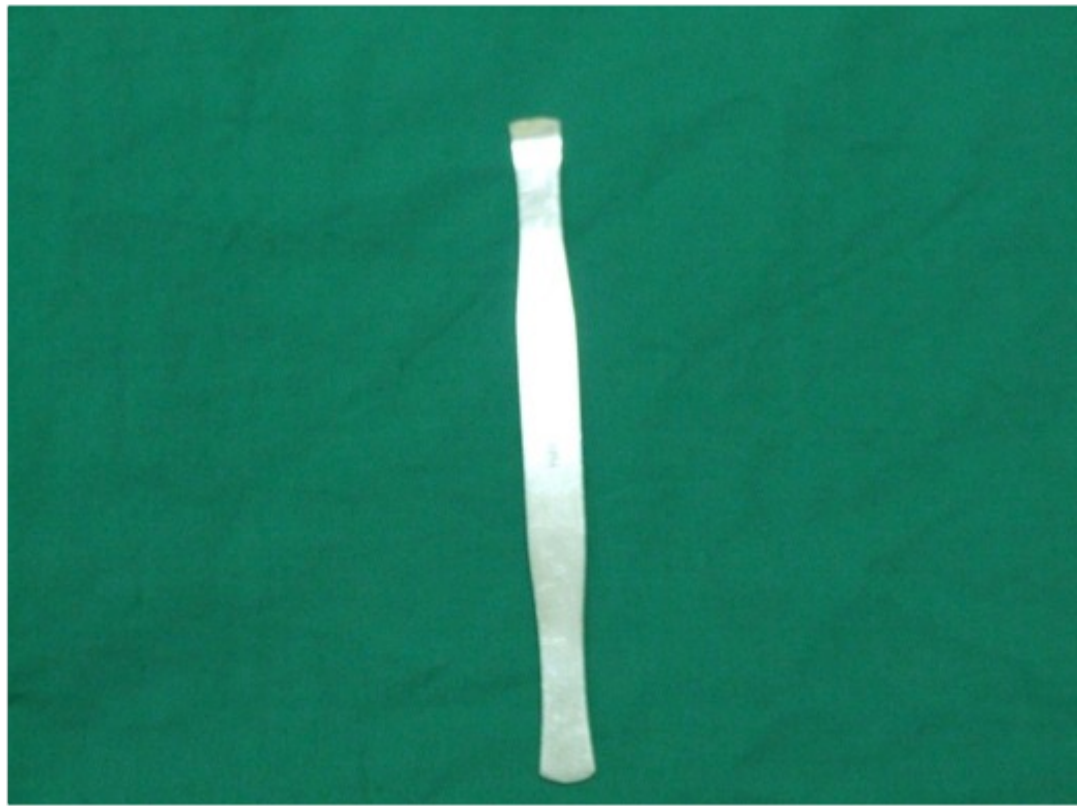
# Venenspreizpinzette



# Nadelhalter



# Separator





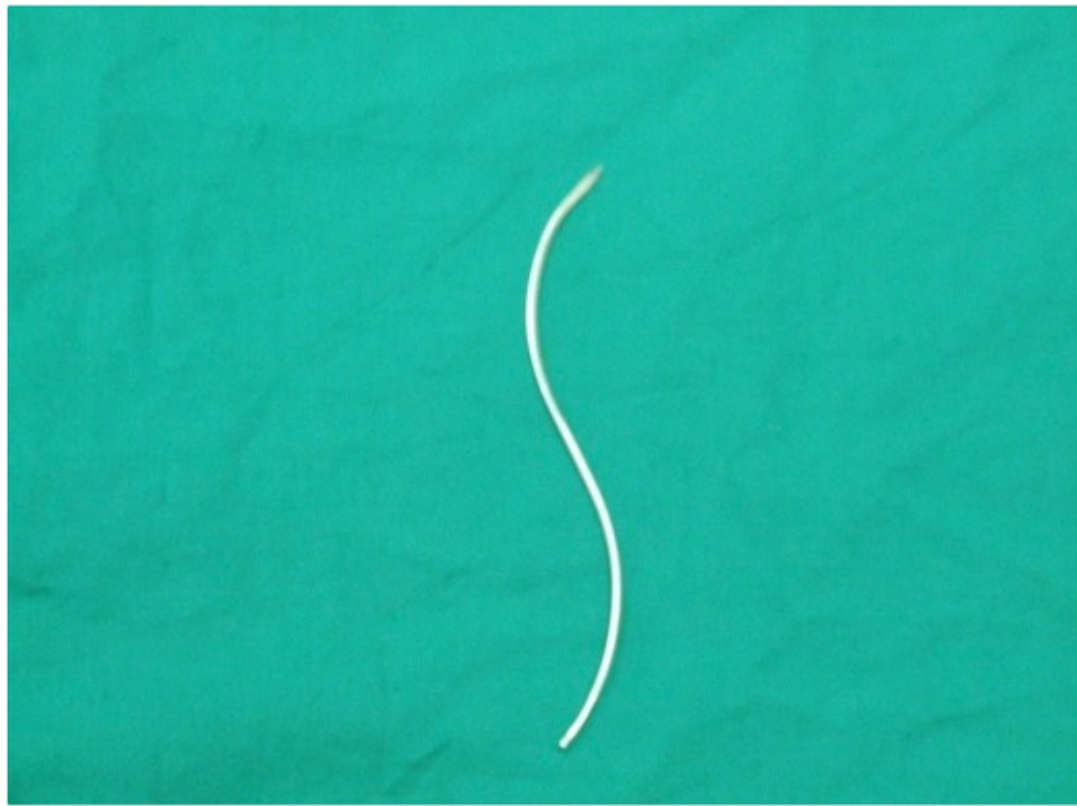
# Hämostatische Klemme



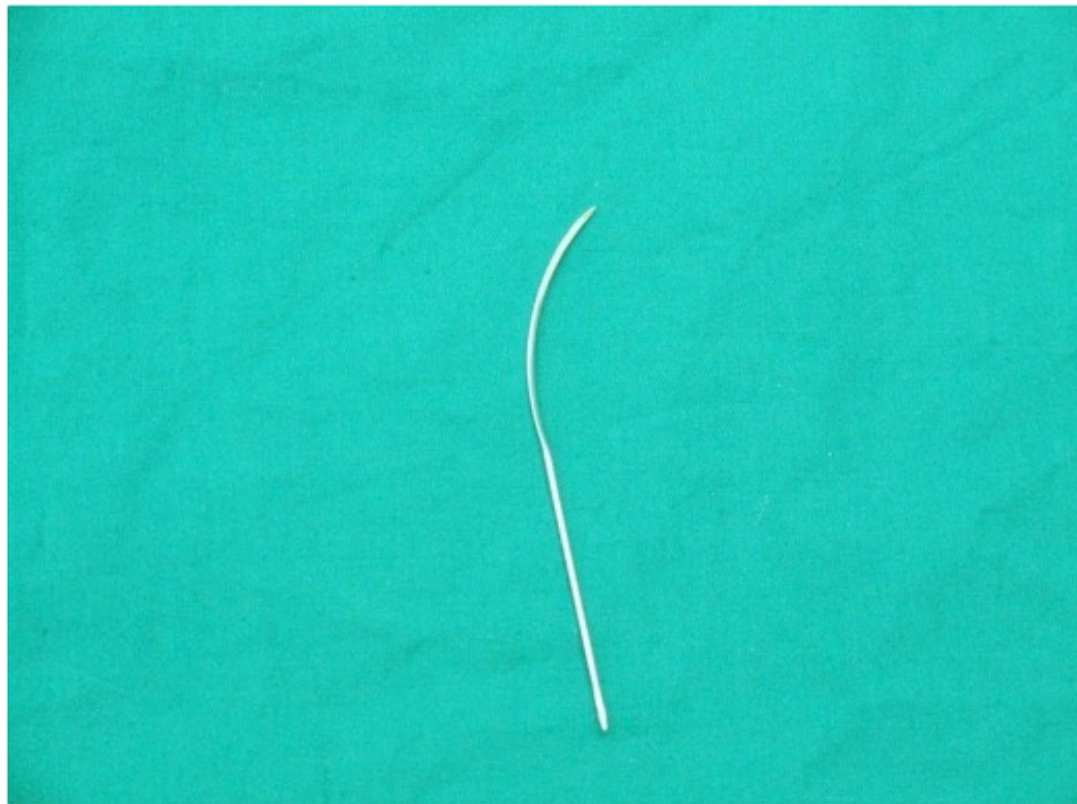
# Skalpell Heft mit Klingen



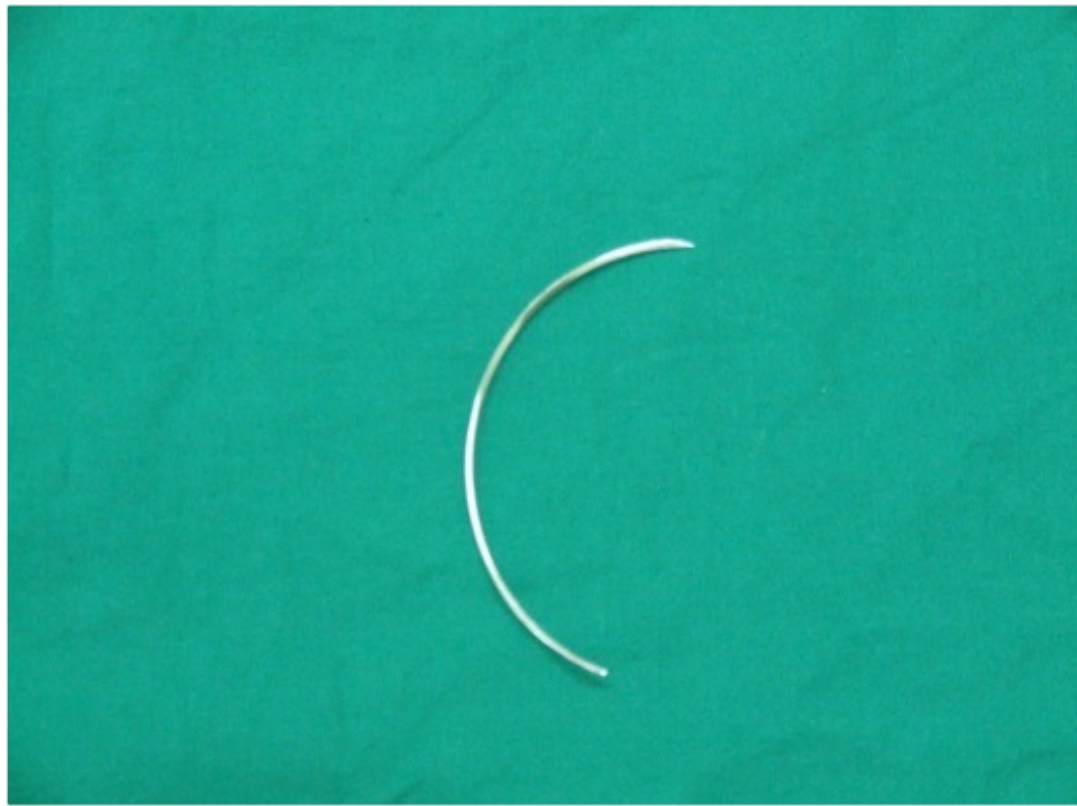
# Nadel serpentine



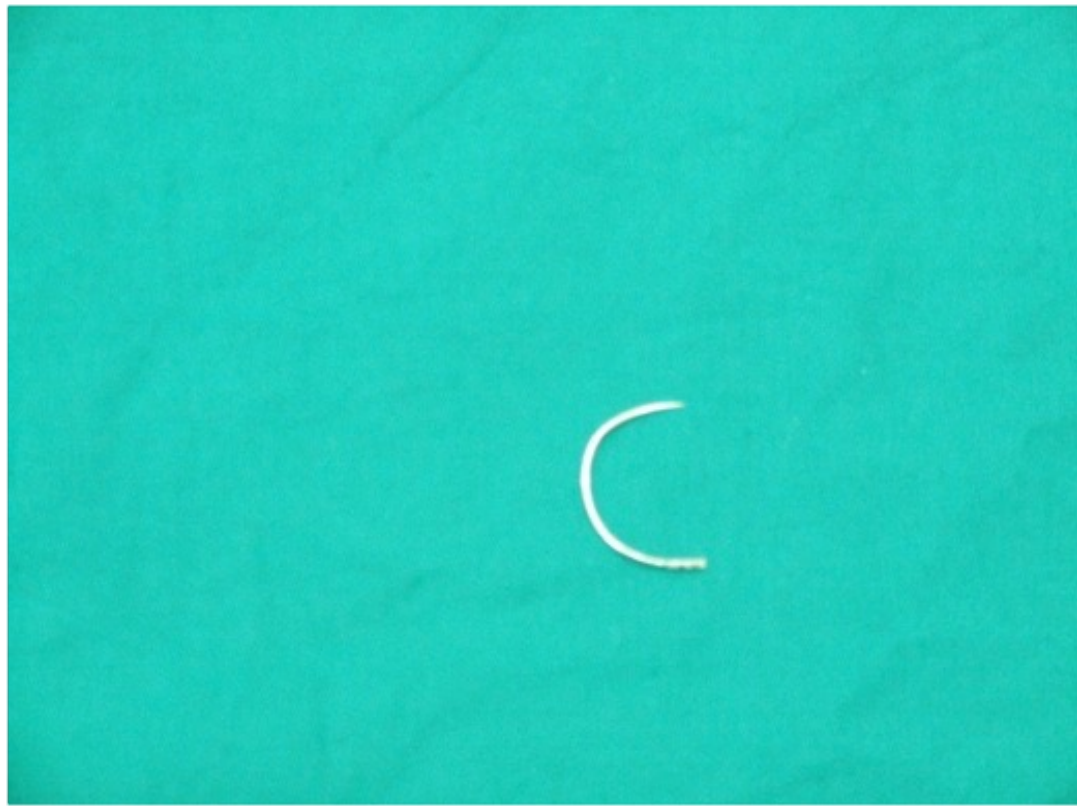
# Nadel halbcurve



# Nadel halbrund



# Nadel chirurgisch



# Schere spitz/spitz



# Nasalsauger





# Spatel



# Spritze



# Röhrenfaßklemme



# Kanülen



# Retraktor



# Arterienklemme



# Trokar



# MC Donald Separator





# Kopfstütze



**Vielen Dank**

